

CERAMIC LAMPHOLDERS AND LAMPS

VERSION 2.1

CATALOGUE OF PRODUCTS TECHNICAL PART

K8

NOTES

A series of horizontal dotted lines for writing notes.

Lighting devices and sockets



The SEZ-Trade Ltd. comes on the market with an assortment of ceramic sockets and lighting devices. The products certified in accordance with the STN EN 60238 quality standard are intended for nominal voltage of 250 V and rated current 4 A.

The sockets contain metallic turn of E27 type.

INBUILDABLE SOCKET 4279-002.

The socket is all-ceramic, earthed and containing a console which enables its free mounting on any suitable surface.

SOCKET 4227.

The socket 4227 is all-ceramic designed for lighting devices of class II, containing a clamp M10 x 1 and compatible with the socket of Jablonec type of 1332-837 10x1.

ILUMINANT SOCKET, PLINTH 4287.

The socket is all-ceramic aimed for direct mounting on a suitable surface and compatible with the socket of Jablonec type of 1332-510.

SOCKET 4278-001

The turn part of the socket is ceramic and along with the plastic cover with clamp M10x1 it makes up a compact unit which is user friendly in particular. The socket is designed for lighting devices of class II and it is compatible with the socket of Jablonec type of 1332-136.

INBUILDABLE SOCKET 4227-01, 4279-000

The socket is all-ceramic and aimed to be applied in the lighting bodies, it is compatible with the socket of Jablonec type of 1332-677.

Legend of the symbols used in the catalogue



Material - thermoplastic



Material - porcelain



Designed for the lighting devices of class II.



Rated output in Watts

STRAIGHT AND INCLINED LIGHTING DEVICE

The ceramic armature of the lighting device made of ceramic lighting body and a socket with a turn E27 makes along with the glass sphere (to be purchased separately) a complete ceiling or wall lighting device of a straight (type 4228) or inclined (type 4229) types.

The ceramic armature of the lighting device with a turn for the glass sphere has two openings for fixation on the wall or ceiling.

WALL LIGHTING DEVICE SEZAR

SEZAR meets the requirements of EN 60598-1, STN EN 60598-1 and ČSN EN 60598-1 quality standards and it is delivered in IP 44 version and with transparent cover or with a cover of a red, green and orange colour. The frame of the lighting device enables a trouble free use of both classic and economic bulbs.

WALL LIGHTING DEVICE VERA

It is ideal for illumination of elevator casings, stairways, corridors and toilets. Its advantage is low space consumption (the height of the lighting device is 45 mm only). Cover: IP54

PORTABLE LAMP

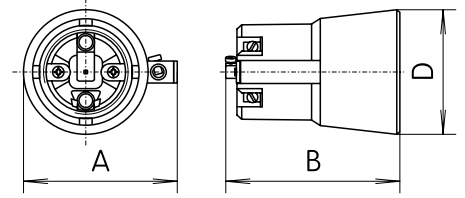
The portable lamps of 070500 type (with length of cable of 10m) and 070501 type (with length of cable of 5m) are equipped with a turn E27, metallic protective grid shielding the bulb. The body of the lamp is made of stainless, oil and acid resistant materials. The leading-in cable is protected with rubber and finishes in a two-pole plug.

Current [A]	Voltage [V]	Turn	Cross section	Type	Built-in socket 4279-002
-------------	-------------	------	---------------	------	--------------------------


IP 20

 60W



4 250 E 27 0,5÷2,5 4279-002



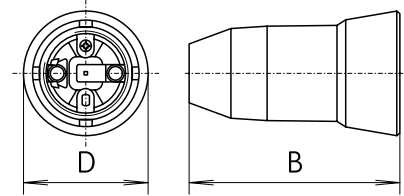
Type \ [mm]	A	B	D
4279-002	53	52	42

Socket 4227


IP 20

 60W 

4 250 E 27 0,5÷2,5 4227



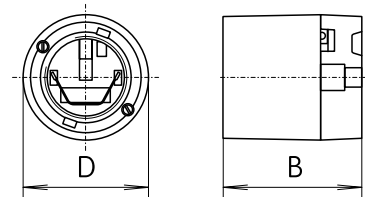
Type \ [mm]	B	D
4227	61	44

Socket 4287


IP 20

 60W



4 250 E 27 0,5÷2,5 4287



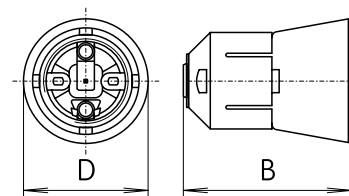
Type \ [mm]	B	D
4287	45	48

Socket 4278-001

 
IP 20

 60W 

4 250 E 27 0,5÷2,5 4278-001



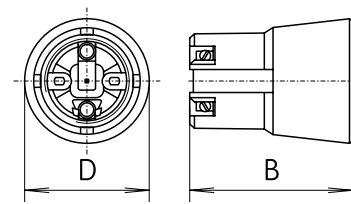
Type \ [mm]	B	D
4278-001	60	46

Current [A]	Voltage [V]	Turn	Cross section	Type	Built-in socket 4227-01
-------------	-------------	------	---------------	------	-------------------------

IP 20

60W

4 250 E 27 0,5÷2,5 4227-01



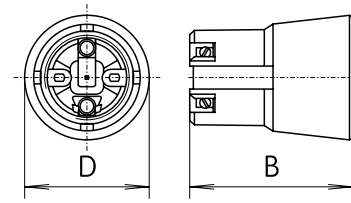
Type \ [mm]	B	D
4227-01	48	46

Socket 4279-000

IP 20

60W

4 250 E 27 0,5÷2,5 4279-000



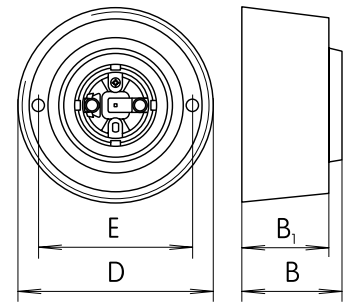
Type \ [mm]	B	D
4279-000	48	46

Straight lighting device 4228

IP 20

60W

4 250 E 27 0,5÷2,5 4228



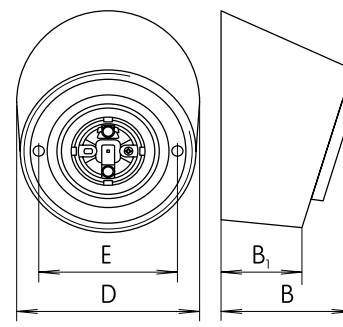
Type \ [mm]	B	B ₁	D	E
4228	54	42	102	68

Inclined lighting device 4229


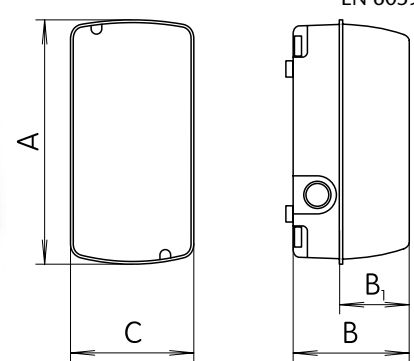
IP 20

60W


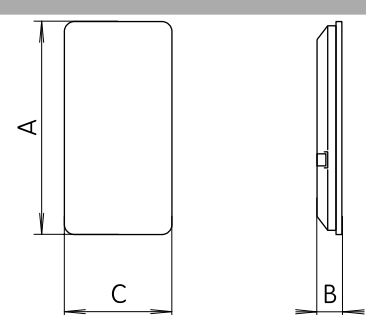
4 250 E 27 0,5÷2,5 4229



Type \ [mm]	B	B ₁	D	E
4229	70	39	102	68

Current [A]	Voltage [V]	Turn	Colour of cover	Type	Wall lighting device SEZAR 3027-y	60W										
4	250	E 27	clear	3027-0	 <p>IP 44 with a cover</p>	 <p>EN 60598-1</p>										
4	250	E 27	red	3027-6												
4	250	E 27	green	3027-4												
4	250	E 27	orange	3027-8												
					<table border="1"> <thead> <tr> <th>Type \ [mm]</th> <th>A</th> <th>B</th> <th>B₁</th> <th>C</th> </tr> </thead> <tbody> <tr> <td>3027</td> <td>226</td> <td>105</td> <td>62</td> <td>114</td> </tr> </tbody> </table>	Type \ [mm]	A	B	B ₁	C	3027	226	105	62	114	
Type \ [mm]	A	B	B ₁	C												
3027	226	105	62	114												

Voltage [V]	Turn	Cross section	Type	Portable lamp 610x0	60W						
250	E 27	2x0,75	61040								
250	E 27	2x0,75	61010								
				<table border="1"> <thead> <tr> <th>Type \ [mm]</th> <th>Length of the leading-in cable</th> </tr> </thead> <tbody> <tr> <td>61040</td> <td>10 m</td> </tr> <tr> <td>61010</td> <td>5 m</td> </tr> </tbody> </table>	Type \ [mm]	Length of the leading-in cable	61040	10 m	61010	5 m	
Type \ [mm]	Length of the leading-in cable										
61040	10 m										
61010	5 m										

Voltage [V]	Turn	Colour of cover	Type	Wall lighting device VERA x	8W												
250	G 23	White	VERA 1														
250	G 23	White	VERA 2														
				<table border="1"> <thead> <tr> <th>Type \ [mm]</th> <th>A</th> <th>B</th> <th>C</th> </tr> </thead> <tbody> <tr> <td>VERA 1</td> <td>330</td> <td>45</td> <td>185</td> </tr> <tr> <td>VERA 2</td> <td>330</td> <td>45</td> <td>185</td> </tr> </tbody> </table>	Type \ [mm]	A	B	C	VERA 1	330	45	185	VERA 2	330	45	185	
Type \ [mm]	A	B	C														
VERA 1	330	45	185														
VERA 2	330	45	185														